

# **K Series**

---

## **Micro-ATX All-In-One**

Hibertek International Limited

---

Professional R&D Service Provider



## Main Point

---

- Support Intel and AMD Platform
- Support 3.5" HDD to save cost
- Support 244 x 244 mm MicroATX Motherboard
- Support Stable High Adjustable Stand
- Support Chassis Intrusion

# Contents

---



**01**

**Space-Saver**



# Space Saving

Combination of desktop tower and monitor





# Cable Collection

Simple and concise design to line lines





**02**

## **User-Friendly Demonstrator**



## 23.8" IPS Wide View Angle Vision

**178  
Degree  
Viewing  
Angle**

**1920(H)  
X  
1080(V)**

**23.8"  
LED-  
Backlight**

**No Bright  
Dot**







## 21.5" Anti-Glare and Optional Wild View Angle Display



**TN Panel  
VA Panel  
(Option)**

**1920(H)  
X  
1080(V)**

**21.5"  
LED-  
Backlight**

**No Bright  
Dot**



# Support 10-Point Capacitive Multi-Touch (Optional)

For education or office use





# Signal Is Never The Problem

Optional display input resource



**03**

## **Multifunction Fulfiller**



# Support Intel 12<sup>th</sup> Generation Core™ i CPU

Support desktop CPU up to 65W





# Support AMD CPU Up to 65W

Support CPU fan up to 46mm for AMD CPU

# AMD





# Support ASUS, GB, MSI, ECS, ASROCK MB

Up to 244 x 244 mm MB, both Intel and AMD Platform





# Support Standard Micro ATX MB and Desktop Components

Up to 244 x 244 mm MB, both Intel and AMD Platform

- Enjoy Desktop Performance and Flexibility  
with Desktop Components -

HDD



ODD



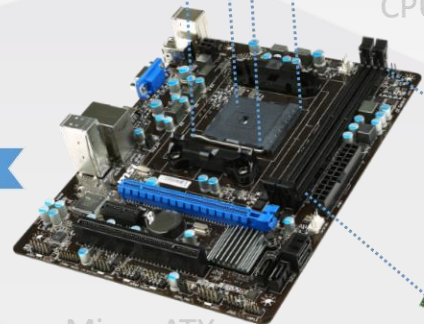
CPU



CPU-FAN



Micro-ATX



DRAM



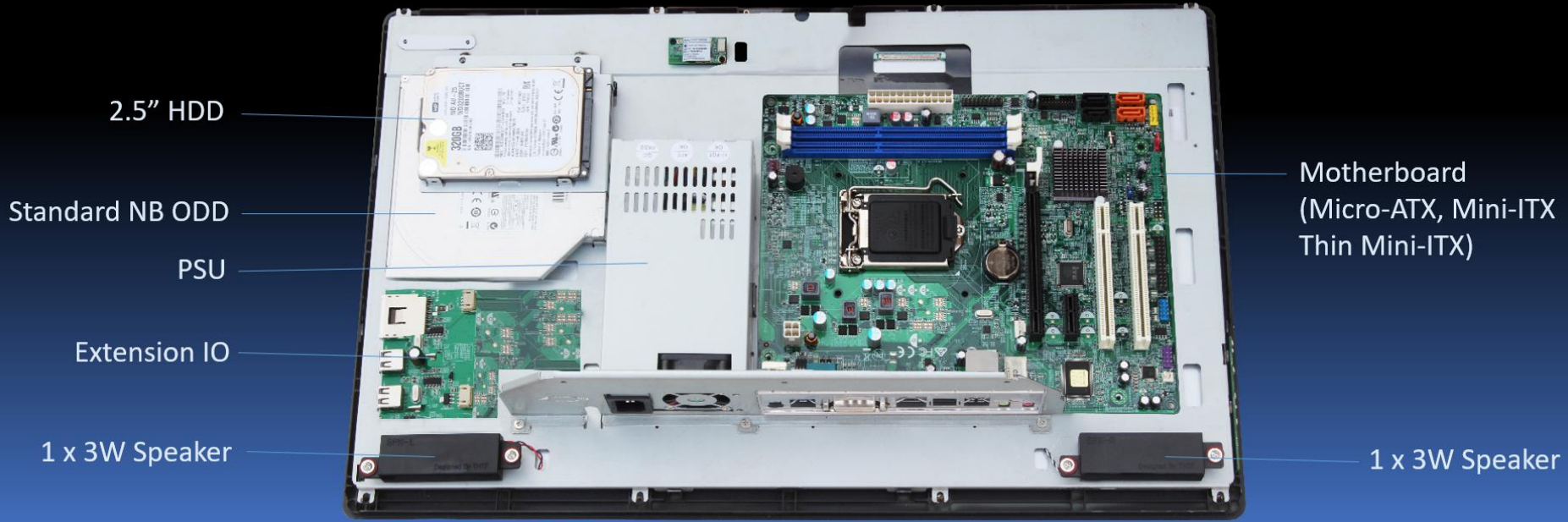




# Easy Assembly

Simple, Clear and Professional Internal Placement

An Example





## Side I/O

Always by your side



USB2.0 (default)



USB3.0 (Optional)

4-in-1 Card Reader

USB2.0 or USB3.0

USB2.0 or USB3.0





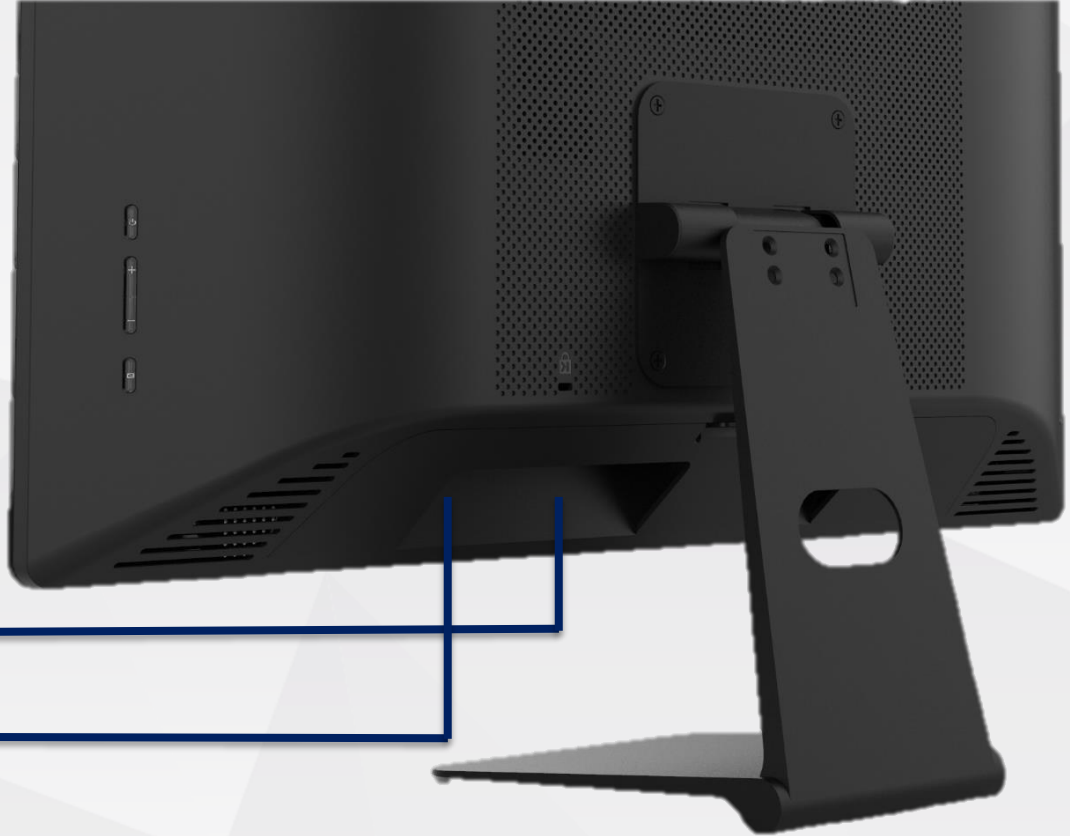
## Back I/O

Got your back all the time



COM Port (Option)

From Motherboard





# Multi-Storage Devices

2.5" HDD or 3.5" HDD? BOTH!





## Support 12.7mm / 9.5mm DVD-RW

For special government and tender requirement



**04**

## **Immediate Con-Call Helper**

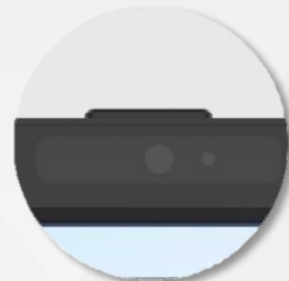


# Camera, Microphone and Speaker

Always in front of you



2M Camera + MIC



2 x 3W Speaker



# Wi-Fi / Bluetooth

High performance of Wi-Fi Signal transmit & receive

USB Wi-Fi ac/ b/g/n + BT4.2/5.0  
USB Wi-Fi b/g/n + BT4.2  
USB Wi-Fi b/g/n  
(Option)





**05**

## **Trading Secret Protector**



# Windows Hello log in

Support Windows Hello by finger print ID



Windows Hello



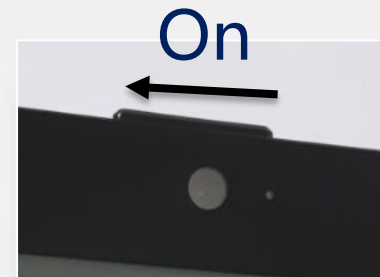
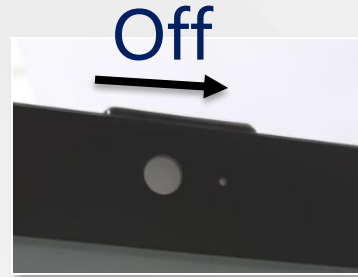
Finger Print Module  
(Option)





# Catch Image When Only Allowed

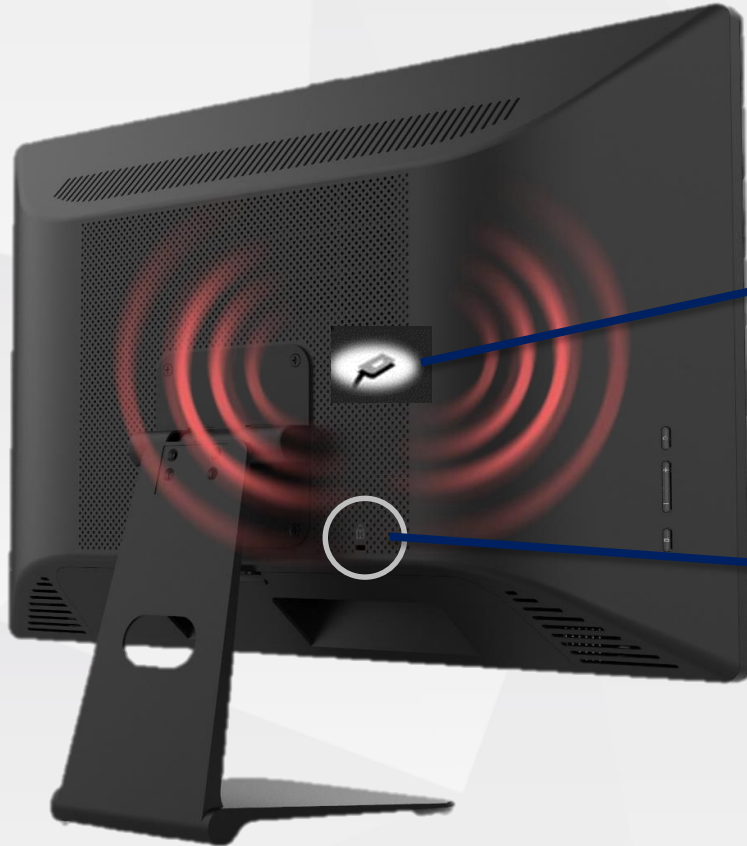
Camera Curtain / Anti-Spy LED





# Kensington Lock & Chassis Intrusion

Level up protection of AIO



**06**

## **Working Quality Caregiver**



## Solid Stand with 180° Adjustable Angle

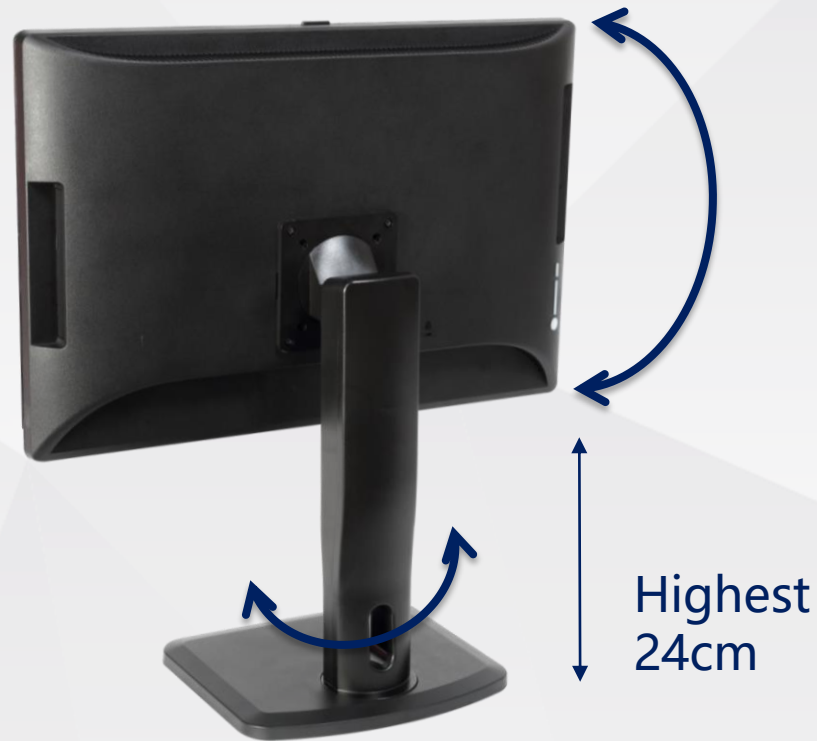
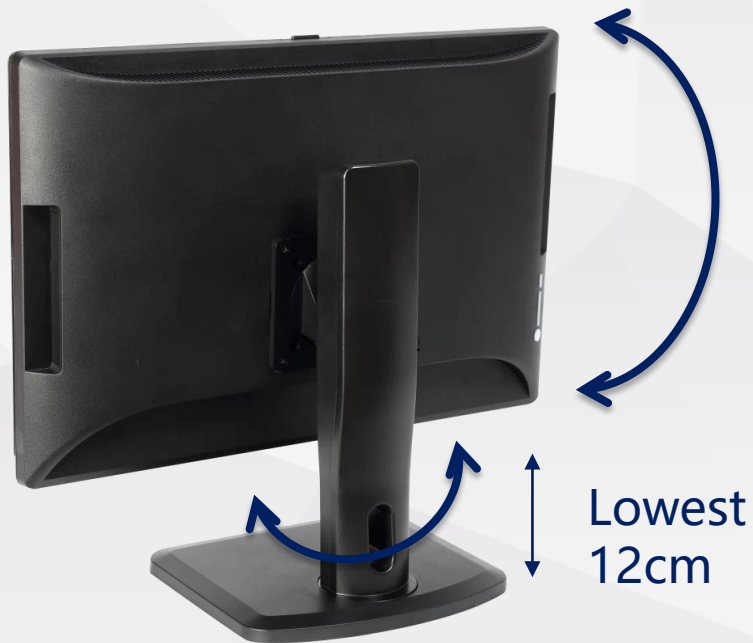
Change angle upon your needs with user friendly design





# High Adjustable Stand

Support rotate and highness adjustable





# High Quality Power Supply

200W PSU or 80Plus Silver PSU







# Review K24



Camera Curtain & Anti-Spy LED (Option)

2M Camera & MIC (Option)

ODD

Side I/O Ports

2x3W Speakers

2-in-1 Stand

Plastic Bezel

2x3W Speakers

Back I/O Ports



# SPEC of K24

|                              |  |                         |   |
|------------------------------|--|-------------------------|---|
| <b>Operating System</b>      | Support Windows 11   | <b>Camera &amp; MIC</b> | <b>Option:</b> 2M Camera + Single/Dual MIC  |
| <b>Display</b>               | 23.8", LED-backlight, VA/IPS Panel, FHD: 1920(H) x 1080(V)<br><b>Option:</b><br>No bright dot  | <b>Speaker</b>          | 2 x 3W (8Ω)   |
| <b>VESA</b>                  | VESA Holes   | <b>Color</b>            | Black/White   |
| <b>CPU</b>                   | Support<br>- Intel® for 12 <sup>th</sup> /11 <sup>th</sup> /10 <sup>th</sup> ... Generation Core™ i7/Core™ i5/<br>Core™ i3/Pentium®/Celeron® up to 65W Processors<br>- AMD desktop CPU | <b>Stand</b>            | 2-in-1 Stand<br><b>Option:</b><br>- Round Stand<br>- High Adjustable Stand  |
| <b>Motherboard</b>           | Support<br>- Standard Micro-ATX motherboard<br>- Standard Mini-ITX motherboard<br>- Standard Thin Mini-ITX   | <b>Power Supply</b>     | <b>Option:</b><br>200W Internal Power Supply<br>150W 80Plus Silver PSU  |
| <b>Storage</b>               | Support<br>- 2 x 2.5" SATA HDD<br>- 1 x 3.5" SATA HDD + 1 x 2.5" SATA HDD  | <b>Dimensions</b>       | 562.2(L) x 369.9(H) x 86.7(D) mm  |
| <b>Memory</b>                | Support 2 x DIMM   | <b>Accessories</b>      | 1 x User Manual, 1 x Power Cable  |
| <b>Optical Drive</b>         | Support 1 x 12.7mm /9.5mm ODD  | <b>Kensington Hole</b>  | Yes   |
| <b>Side I/O Ports</b>        | 2 x USB2.0 or USB3.0<br>1 x 4-in-1 Card Reader   | <b>Chassis Feature</b>  | <b>Option:</b><br>- Cable Cover<br>- Camera Curtain and Anti-Spy LED<br>- HDMI / DVI Input Display<br>- Internal Audio Cable<br>- Chassis Intrusion<br>- Extension PCIe Board |
| <b>Back I/O Ports</b>        | <b>Option:</b><br>- 1 x COM<br>- From Motherboard  |                         |   |
| <b>Wireless Data Network</b> | <b>Option:</b><br>- USB Wi-Fi ac/ b/g/n + BT4.2<br>- USB Wi-Fi b/g/n + BT4.2<br>- USB Wi-Fi b/g/n  |                         |   |



# SPEC of K22

|                              |   |                         |   |
|------------------------------|---|-------------------------|---|
| <b>Operating System</b>      | Support Windows 11  | <b>Camera &amp; MIC</b> | <b>Option:</b> 2M Camera + Single/Dual MIC  |
| <b>Display</b>               | 21.5", LED-backlight, TN Panel, FHD: 1920(H) x 1080(V)<br><b>Option:</b><br>VA, No bright dot   | <b>Speaker</b>          | 2 x 3W (8Ω)   |
| <b>VESA</b>                  | VESA Holes  | <b>Color</b>            | Black/White   |
| <b>CPU</b>                   | Support<br>- Intel® for 12 <sup>th</sup> /11 <sup>th</sup> /10 <sup>th</sup> ...Generation Core™ i7/Core™ i5/<br>Core™ i3/Pentium®/Celeron® up to 65W Processors<br>- AMD desktop CPU | <b>Stand</b>            | 2-in-1 Stand<br><b>Option:</b><br>- Round Stand<br>- High Adjustable Stand  |
| <b>Motherboard</b>           | Support<br>- Standard Micro-ATX motherboard<br>- Standard Mini-ITX motherboard<br>- Standard Thin Mini-ITX  | <b>Power Supply</b>     | <b>Option:</b><br>200W Internal Power Supply<br>150W 80Plus Silver PSU  |
| <b>Storage</b>               | Support<br>- 2 x 2.5" SATA HDD<br>- 1 x 3.5" SATA HDD + 1 x 2.5" SATA HDD   | <b>Dimensions</b>       | 562.2(L) x 369.9(H) x 86.7(D) mm  |
| <b>Memory</b>                | Support 2 x DIMM  | <b>Accessories</b>      | 1 x User Manual, 1 x Power Cable  |
| <b>Optical Drive</b>         | Support 1 x 12.7mm /9.5mm ODD   | <b>Kensington Hole</b>  | Yes   |
| <b>Side I/O Ports</b>        | 2 x USB2.0 or USB3.0<br>1 x 4-in-1 Card Reader  | <b>Chassis Feature</b>  | <b>Option:</b><br>- Cable Cover<br>- Camera Curtain and Anti-Spy LED<br>- HDMI / DVI Input Display<br>- Internal Audio Cable<br>- Chassis Intrusion<br>- Extension PCIe Board |
| <b>Back I/O Ports</b>        | <b>Option:</b><br>- 1 x COM<br>- From Motherboard   |                         |   |
| <b>Wireless Data Network</b> | <b>Option:</b><br>- USB Wi-Fi ac/ b/g/n + BT4.2<br>- USB Wi-Fi b/g/n + BT4.2<br>- USB Wi-Fi b/g/n   |                         |   |



## Our Best Service

---

**L10**

- Whole System (With OS or without OS)

**L6**

- Barebone with Motherboard (Without CPU, MEM, HDD, ODD)

**L5**

- Chassis without Motherboard (Without CPU, MEM, HDD, ODD)

**SKD**

- Chassis or some parts semi-assembled

**CKD**

- All knock down

---

# THANK YOU!

---

Sales@Hibertek.Com  
Purchaser@Hibertek.Com