



**TITANUS EYE<sub>o</sub>T**

**Intel® Embedded DSS Solution**

*The Intelligent Digital Security & Surveillance System*

# ***A Complete DSS Solution***

***Megapixel IP  
Dome Camera (Indoor)***



***Megapixel Box  
IP Camera***



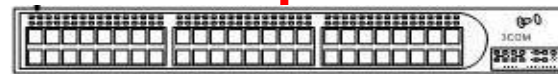
***Megapixel Cube  
IP Camera (Indoor)***



***Megapixel IR Bullet  
Camera (Outdoor)***



***Cat5e  
(IP)***



***Ethernet Switch***



***DSS System ( NVR/ VMS)***



***Central Monitoring Station***

# ***Conventional DSS*** *vs* ***Eye of IoT DSS***

*The conventional DSS :*

- *CCTV surveillance*
- *Video recording & playback*
- *Video file backup*
- *Remote video monitoring*

# ***Conventional DSS*** *vs* ***Eye of IoT DSS***

*DSS as the Eye of IoT:*

- *Behaviour analysis via Video Analytic*
- *Business data analysis via System Integration*
- *Remote video management via Center Monitoring System*
- *Be part of IoT Smart Home/ Smart Building*



# TITANUS EYEoT DSS Solution

The **TITANUS EYEoT DSS** offer cutting-edge collaboration Intel Based Network Video Recorder (NVR) & Megapixels IP Camera designed to address every segments' specific security needs. Built upon comprehensive and easy-to-integrate hardware and supporting technologies, EYEoT DSS is an extensible system with ready video analytics functions to protect and secure users and their assets. It can be customized and seamlessly integrated with other security applications, such as central monitoring, Point-of-Sales and access control system while ensuring your business operation and management efficiency is maintained at maximum level.

TITANUS  
NVR

TITANUS  
Megapixels  
IP Camera

TITANUS  
CMS



TITANUS  
iVAS

TITANUS  
iVAS+

TITANUS  
Integration

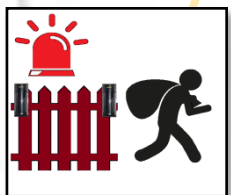
## **Commercial / Retail**

- People Counting
- VIP list Alert
- Heat Map
- Point of Sales Integration
- Central Management  
(Multi-chain store)



## **Finance**

- Blacklist Alert
- Crowd / Intrusion Detection
- CMS Central Management
- Access & Alarm Integration



Intel Embedded  
**EYEoT**  
DSS Solution

Is built for...

## **Government**

- Facial Recognition
- License Plate Recognition
- City Surveillance
- GPS Mobile Surveillance
- School Safety



## **Smart Manufacturing**

- Production monitoring
- Logistic and Inventory surveillance
- Time Attendant / Access Integration



# TITANUS **iVAS** & **iVAS** - Intelligent Video Analytic Suite (+)

The TITANUS built-in **iVAS** analyse human/ vehicle/ objects' behaviour and activities with instant notification alert to user for immediate action. The **iVAS** capable to link with data search that enhance the efficiency of post event action whereby add-on **iVAS+** perform a high accuracy deep learning based video analytics for high security surveillance segment that require higher profile of analysis result.

## The **iVAS** include :

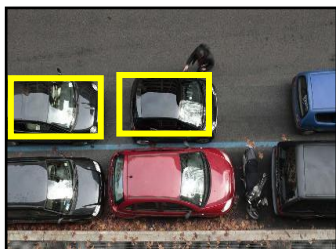
- **Object / Vehicle Counting**
- **Scene / Focus Change Detection**
- **Intrusion Detection**
- **Crowd Detection**
- **Retail VA (Heat Map/ People Counting)**
- **Unattended Object / Missing Object Detection**
- **Face Detection**
- **Illegal Parking/ Wrong Driving Direction**

## The **iVAS+** include :

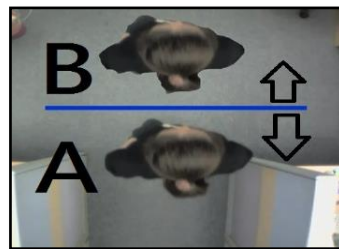
- **Facial Recognition**
- **Vehicle License Plate Recognition**
- **Object Auto Tracking**
- **Fire & Smoke Detection**
- **Hard Hat & Reflective Vest Detection**
- **Helmet Detection**



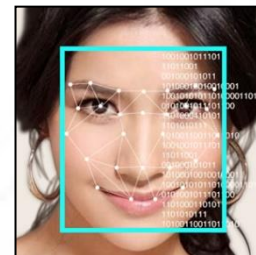
**Crowd  
Detection**



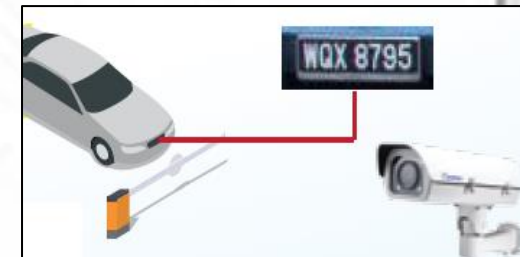
**Illegal  
Parking**



**People  
Counting**



**Facial  
Recognition**



**License Plate  
Recognition**



# TITANUS EYEoT DSS Solution – Lite series

**Build based on Intel Embedded Platform with Intel HD Graphics**



## **TITANUS Lite X3 / X5**

- Powered by Intel Core-i3 / Core-i5 \*
- Support 16-32ch IP Camera
- Win 10 IoT / Win Embedded OS
- Support 2x HDDs (2x 10TB)
- Supercool Aluminum Casing



## **TITANUS Lite M3 / M5 / M7**

- Powered by Intel Core-i3 / Core-i5 / Core-i7 \*
- Support 16-64ch IP Camera
- Win 10 IoT / Win Embedded OS
- Support 4x HDDs (4x 10TB)
- Supercool Aluminum Casing

\*Intel Core i7 = Intel® Core™ i7-12700, Intel® Core™ i7-11700, Intel® Core™ i5-10700

Intel Core i5 = Intel® Core™ i5-12500, Intel® Core™ i5-12400, Intel® Core™ i5-11500, Intel® Core™ i5-11400, Intel® Core™ i5-10400

Intel Core i3 = Intel® Core™ i3-12300, Intel® Core™ i3-12100, Intel® Core™ i3-12300, Intel® Core™ i3-10300, Intel® Core™ i3-10100



# TITANUS EYEoT DSS Solution – Pro & RAID series

*Build based on Intel Embedded Platform with Intel HD Graphics*

## Pro Series



### **TITANUS Pro P5 / P7**

- Powered by Intel Core-i5 / Core-i7 \*
- Support 16-64ch IP Camera
- Win 10 IoT / Win Embedded OS
- Support 5x / 8x HDDs
- 5x / 8x Hotswap HDD Bay
- 19" Rack Mount with 700W PSU

## RAID Series



### **TITANUS RAID RX16 / RX24**

- Powered by Intel Core-i7 \*
- Support 16-128ch IP Camera
- Win 10 IoT / Win Embedded OS
- Support 16-24x HDDs
- Support RAID with 16x / 24x Hotswap HDD Bay
- Optional SAS Storage Expansion
- 19" Rack Mount with Redundant PSU

\*Intel Core i7 = Intel® Core™ i7-12700, Intel® Core™ i7-11700, Intel® Core™ i5-10700  
Intel Core i5 = Intel® Core™ i5-12500, Intel® Core™ i5-12400, Intel® Core™ i5-11500, Intel® Core™ i5-11400, Intel® Core™ i5-10400

# TITANUS EYEoT DSS Solution – Megapixels IP Camera

*Range from 1.3 to 12 Megapixels IP Cameras*



## **Dome**

- Fixed / VF / Motorized Len
- IR 15M to 50M
- 2-way Audio



## **Bullet**

- Fixed / VF / Motorized Len
- IR 15M to 70M



## **Box Camera**

- Vari-focal Len
- Super Low Lux, WDR
- 2-way Audio



## **FishEye**

- Fisheye len
- 360° endless view
- Zero blind spot
- IR 30M



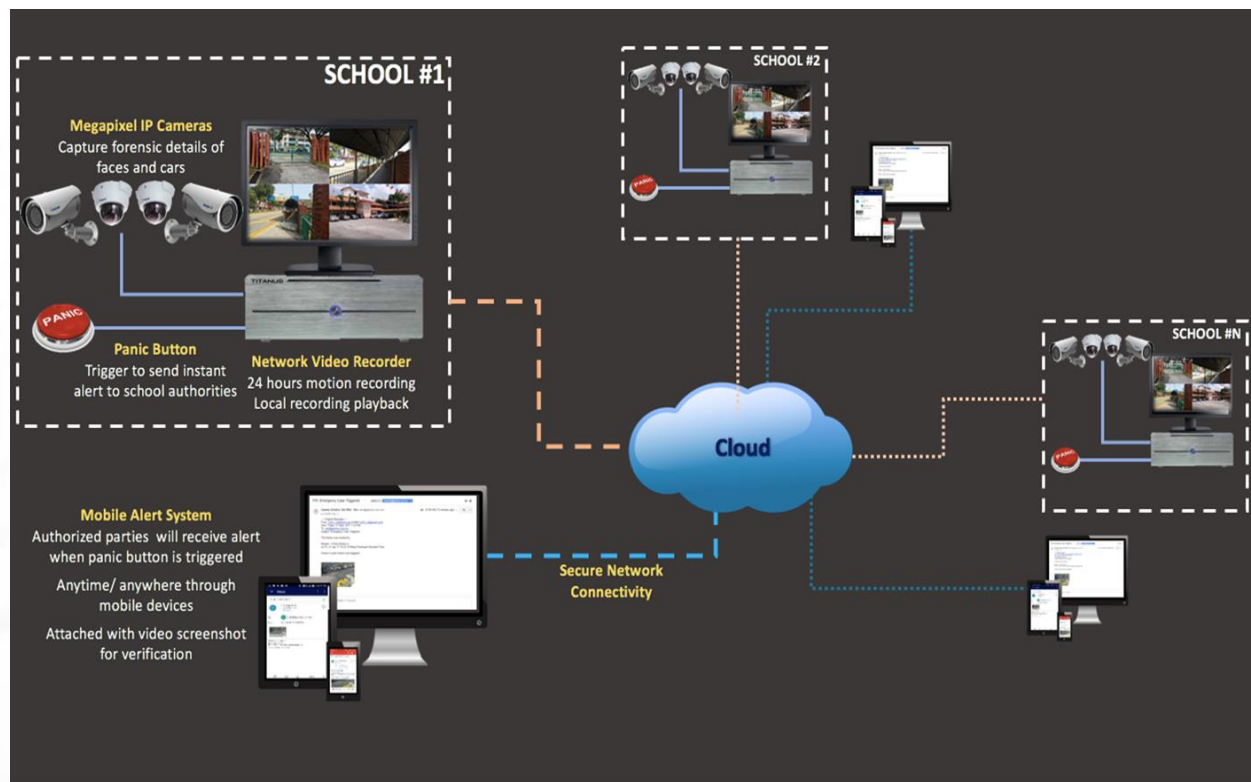
## **Speed dome**

- 360° endless patrol view
- Motorized zoom len
- IR 80-120M
- Motion Tracking

## Case Study:

### **TITANUS EYEoT DSS for schools, help in reduce crime and prevent kidnapping happen at school.**

Total of 100 primary schools are installed with TITANUS EYEoT DSS solution in 2017, **all high risk hotspots especially school entrance and exit, students drop-off and pick-up areas are installed with 4Megapixels IP cameras and in case of any incident happen, important video footage will be captured in megapixels resolution. All activities, faces and car plate numbers will be identified clearly for further investigation.**





## Actual Megapixels picture captured at school entrance





***For further enquiries, you can reach us at:***



***Tel: +603-4149 1800***

**Website**

***<http://www.gamma.com.my>***



***<https://www.facebook.com/gammasolution>***

**WAN YAT HON**

**[yhwan@gamma.com.my](mailto:yhwan@gamma.com.my)**



**SIM TIONG YAN**

**[sim@gamma.com.my](mailto:sim@gamma.com.my)**



**GAMMA SOLUTION SDN BHD**  
(588514-P)

