

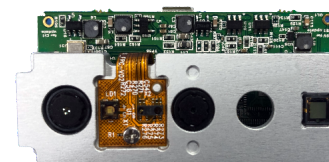
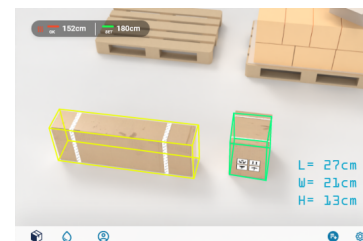
LIPSMetric™ HA110 Handheld Dimensioner

Dimension Measurement Anytime and Anywhere



Product Highlights

- Industry-leading measuring speed & accuracy
- Easily fit your mobile device design with small footprint camera module
- Flexibility to measure anytime and anywhere with a mobile device
- Ability to measure both cubic or non-cubic objects
- Identify floor with AI algorithm. No need for calibration
- Automatically outline object dimensions with AI algorithm even when it's moving
- Ability to measure metal or shiny surface such as plastic wrap



LIPSedge™ L-Series
3D Structured-Light Camera



Quick

Instant capture of underlying object dimension anytime and anywhere



Intelligent

Automatically identify the floor and detect object dimension using AI. No pre-calibration required



Track

Keep track of historical measurement data



Simple

Point and click operation. No training required



Friendly

Support system integration with RESTful API



Model		LIPSMetric™ HA110 Handheld Dimensioner Camera Kit	
OS	Windows 10 Linux 18.04/20.04 Android 10 on arm64-v8a CPU platform		
System Requirement	Minimum Requirements: Intel® Pentium® Gold 4415Y/4425Y/or above RAM 4GB SSD 64GB Panel Resolution 1280x720 or 1280x800		
	For Performance Recommended: Intel® Pentium® Gold 6500Y/or above RAM 4GB or above SSD 64GB or above Panel Resolution 1920x1200 (or 1920x1280)		
Camera Included	LIPSedge™ L215u/L210u 3D Structured Light Camera		
Object to 3D Camera	Distance	50-120 cm	
	Angle	± 45° (Cubic), ± 30° (Non- Cubic)	
Measuring Range	Object Height	5 ~ 30 cm	
	Object Size L x W x H (cm)	Min: 10 x 10 x 2 cm Max: 60 x 40 x 30cm	
	Type	Cubic / Non-cubic	
Accuracy	±1.0 cm at best case in 50-70cm (cubic) ±2.0 cm at other case (Cubic) , ±3.0 cm (Non-Cubic)		
Other requirements	USB 2.0 port or above arm64-v8a for Android OS		

3D Camera Included

Model		LIPSedge™ L215u/L210u 3D Structured-Light Camera	
Environment	Indoor & Outdoor		
Technology	Structured-Light		
RGB Resolution	1280 x 800 @ 6fps, 640 x 480 @ 25fps		
RGB FoV (H × V × D)	50° x 74° x 84° (+/- 3°)		
Accuracy	Up to 0.3% @ 100 cm		
Dimension (mm)	<ul style="list-style-type: none"> • 26.6mm * 54mm * 14.2mm (L210u module) • 63mm * 30mm * 17mm (L215u w/ enclosure) 		
Interface	USB2.0 Micro-B		

